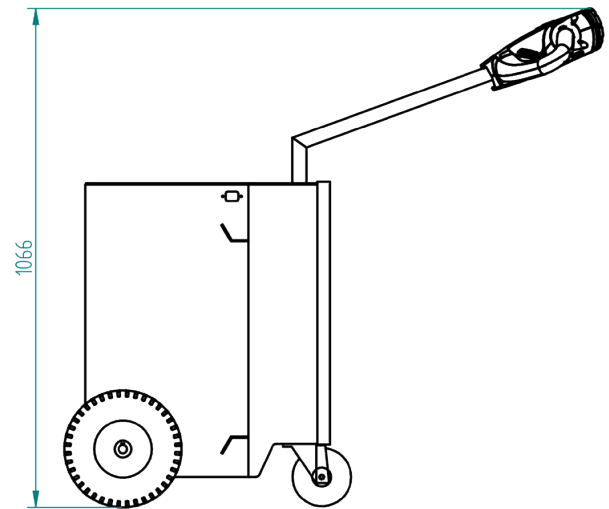
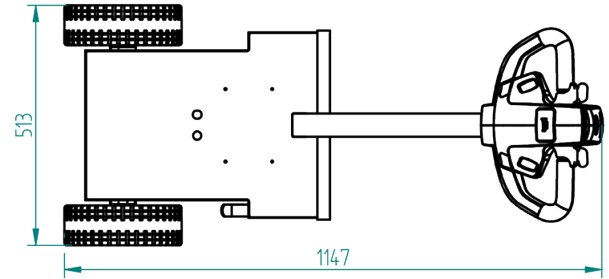




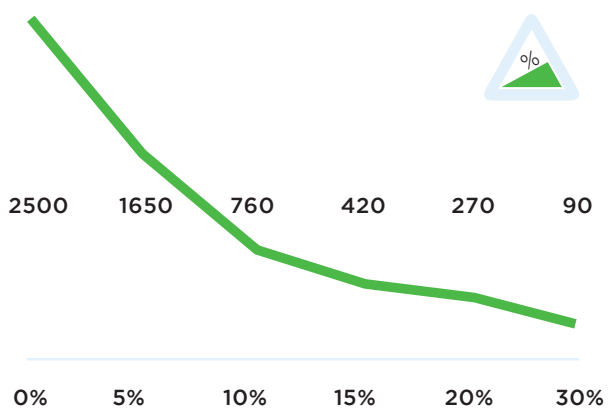
## Specifications T2500-CLEAN ROOM

<b>Frame</b>	Stainless steel, glass pearl blasted
<b>Drive</b>	24V DC, 600W, 100 rpm
<b>Weight</b>	250 kg
<b>Weight trailer</b>	2500 kg
<b>Battery</b>	Built in, 24V, 75 Ah
<b>Speed</b>	Max. 4,7 km/h
<b>Drive wheels</b>	Non marking full rubber ø250x80 mm
<b>Width</b>	513mm
<b>Length</b>	1147mm
<b>Adze height</b>	1066mm
<b>Folded</b>	N/A
<b>Noise level</b>	68,5 dB
<b>To use from</b>	-40 °C / 70 °C
<b>Protection class</b>	Machine IP44

## Dimensions T2500-CLEAN ROOM



## Pulling power T2500-CLEAN ROOM (in kg)



\*Measured with a trolley with 2 swivelwheels and 2 fixed castors. Wheel diameter: 160mm

## Standard T2500-CLEAN ROOM



## Standard parts T2500-CLEAN ROOM

**Battery 12V-75A**



Item number:  
M2102

**Battery charger 24V  
10A AGM external ind**



Item number:  
M2134

**Non-marking driving  
wheel (full-rubber)**



Item number:  
M0249

**Safety switch**



Item number:  
Standardpart 2

**2 programmable  
speeds**



Item number:  
Standardpart 3

## Standard parts T2500-CLEAN ROOM

**Engine 600W  
100RPM BRAKE  
6911413X**



Item number:  
M2098

**LED battery indicator  
LBF318-24V**



Item number:  
M0123

## Options T2500-CLEAN ROOM



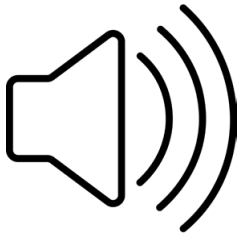
**Emergency stop complete**

Article number:  
OPT0063

**Strobelight**



Article number:  
OPT0065



**Acoustic signal driving backwards**

Article number:  
OPT0254



**Document holder with clip**

Article number:  
OPT0053



**hour counter complete**

Article number:  
OPT0056



**Antistatic strip**

Article number:  
OPT0058



**Code lock**

Article number:  
OPT0068



**Ignition key unequal key**

Article number:  
OPT0145



**Ignition key equal key 701**

Article number:  
OPT0146



**Customized programming**

*please indicate specific settings*

Article number:  
OPT0170



**Programmer for Ital-sea**

Article number:  
D0003



**Hook locking system**

Article number:  
OPT0012

## Options T2500-CLEAN ROOM



**Lifting module for Hooks stainless steel**

Article number:  
OPT0050-RVS



**Electrical locking module for hook**

Article number:  
OPT0129



**HA245.55.45.0.0 (RVS)**

Article number:  
H0004 CLEAN RM



**Pen for drawbar Ø16mm stainless steel**

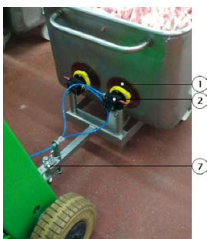
Article number:  
H0069



**HD245.10.35.0.50**

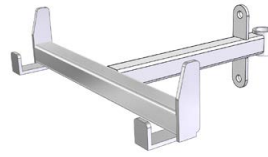
*Fronthook for Hatchery trolleys (EMKA)*

Article number:  
H0090



**Vacuum hook for stainless steel trolleys**

Article number:  
H0093



**Clean Room Hook for hatching trolleys**

*HA360.34.26.0.0 Stainless Steel*

Article number:  
H0111



**Coupling nettingscontainer,**

*Nettings 6mm*

Article number:  
K0007



**Coupling rollcontainer**

*Nettings 10mm.*

Article number:  
K0008



**Coupling Rollcontainer**

*Width 42 mm.*

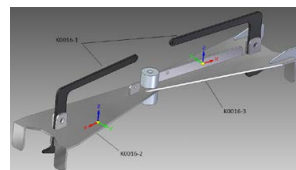
Article number:  
K0010



**Coupling Rollcontainer**

*Suitable for rack Ø6 mm.(Deli XL)*

Article number:  
K0012



**Coupling for Norm trolleys**

Article number:  
K0016

## Options T2500-CLEAN ROOM



**Angle limitation hook  
15 degrees**

Article number:  
OPT0218

---

### Angle limitation

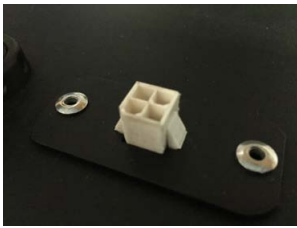


*Stainless steel*

Article number:  
OPT0244

---

### Diagnostic connector



Article number:  
OPT0270

---



## Movexx International B.V.

Generatorstraat 17

3903 LH Veenendaal

Tel +31 (0)318 51.99.00

Fax +31 (0)318 50.80.20

E-mail [info@movexx.nl](mailto:info@movexx.nl)