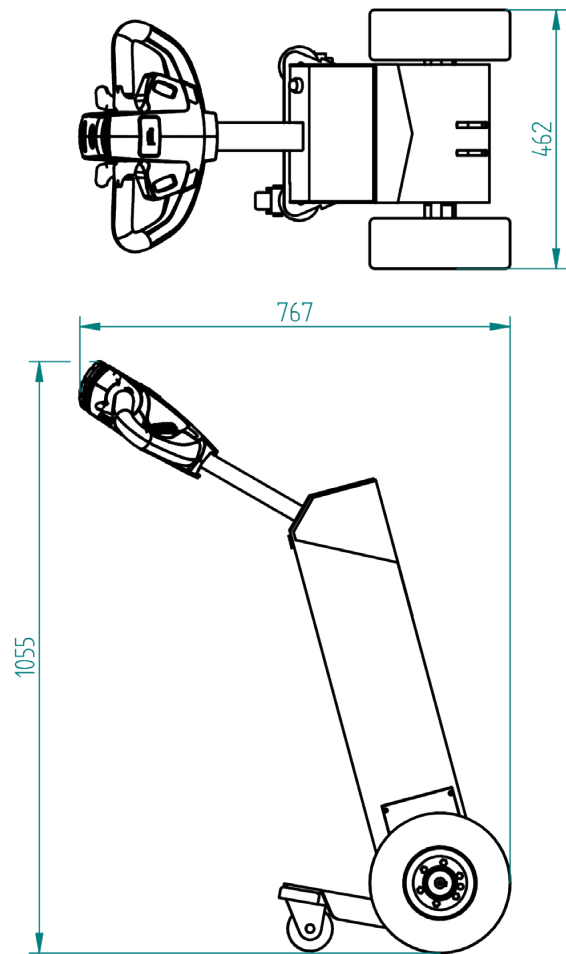




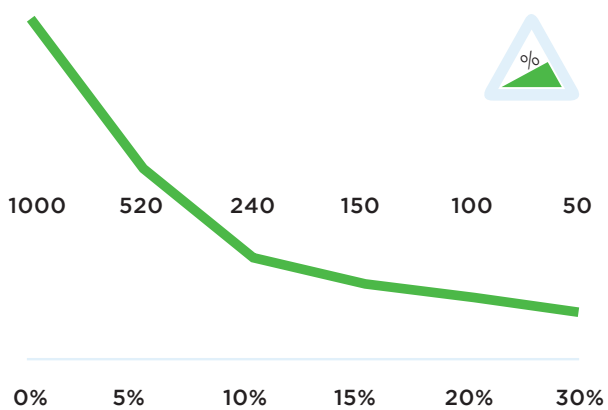
## Specifications T1000-CLEAN ROOM

<b>Frame</b>	Stainless steel, glass pearl blasted
<b>Drive</b>	24V DC, 300W, 100 rpm
<b>Weight</b>	43 kg
<b>Weight trailer</b>	Max. 1000 kg
<b>Battery</b>	Built in
<b>Speed</b>	Max. 5 km/h, freely programmable
<b>Drive wheels</b>	Non marking full rubber ø250x80 mm
<b>Width</b>	462mm
<b>Length</b>	767mm
<b>Adze height</b>	1055mm
<b>Folded</b>	N/A
<b>Noise level</b>	63,8 dB
<b>To use from</b>	-40 °C / 70 °C
<b>Protection class</b>	Machine IP44

## Dimensions T1000-CLEAN ROOM



## Pulling power T1000-CLEAN ROOM (in kg)



\*Measured with a trolley with 2 swivelwheels and 2 fixed castors. Wheel diameter: 160mm

## Standard T1000-CLEAN ROOM



## Standard parts T1000-CLEAN ROOM

LED battery indicator  
LBF318-24V



Item number:  
M0123

Battery charger 24V  
5A AGM external indi



Item number:  
M0246

Non-marking driving  
wheel (full-rubber)



Item number:  
M0249

Safety switch



Item number:  
Standardpart 2

2 programmable  
speeds



Item number:  
Standardpart 3

## Standard parts T1000-CLEAN ROOM

Motor T1000, without  
brake



Item number:  
M1032

Battery 12V 22 Ah  
AGM



Item number:  
M0076

## Options T1000-CLEAN ROOM



**Electromagnetic parking brake T1000**

Article number:  
OPT0004



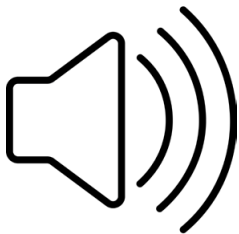
**Emergency stop complete**

Article number:  
OPT0063



**Strobelight**

Article number:  
OPT0065



**Acoustic signal driving backwards**

Article number:  
OPT0254



**Document holder with clip**

Article number:  
OPT0053



**hour counter complete**

Article number:  
OPT0056



**Antistatic strip**

Article number:  
OPT0058



**Code lock**

Article number:  
OPT0068



**Preparation electric hook**

Article number:  
OPT0143



**Ignition key unequal key**

Article number:  
OPT0145



**Ignition key equal key 701**

Article number:  
OPT0146



**Customized programming**

*please indicate specific settings*

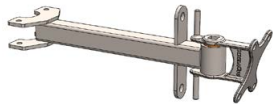
Article number:  
OPT0170

## Options T1000-CLEAN ROOM



**Programmer for Ital-sea**

Article number:  
D0003



**Base part hook 15°  
Stainless steel**

Article number:  
H7011



**Hook locking system**

Article number:  
OPT0012



**Lifting module for  
Hooks stainless steel**

Article number:  
OPT0050-RVS



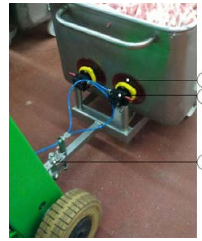
**Electrical locking module for hook**

Article number:  
OPT0129



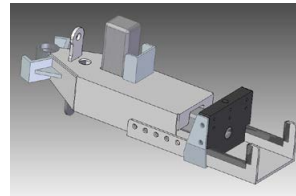
**HA245.55.45.0.0  
(RVS)**

Article number:  
H0004 CLEAN RM



**Vacuum hook for  
stainless steel trolleys**

Article number:  
H0093



**Clamping Hook Stainless steel**

Article number:  
H0096



**Coupling nettingscontainer,**

*Nettings 6mm*

Article number:  
K0007



**Coupling rollcontainer**

*Nettings 10mm.*

Article number:  
K0008



**Coupling Rollcontainer**

*Width 42 mm.*

Article number:  
K0010

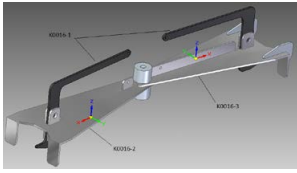


**Coupling Rollcontainer**

*Suitable for rack Ø6 mm. (Deli XL)*

Article number:  
K0012

## Options T1000-CLEAN ROOM



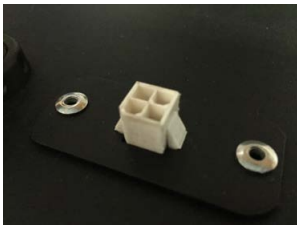
**Coupling for Norm trolleys**

Article number:  
K0016



**Angle limitation hook  
15 degrees**

Article number:  
OPT0218



**Diagnostic connector**

Article number:  
OPT0270



## **Movexx International B.V.**

Generatorstraat 17

3903 LH Veenendaal

Tel +31 (0)318 51.99.00

Fax +31 (0)318 50.80.20

E-mail [info@movexx.nl](mailto:info@movexx.nl)