

**movexx**

driven by brain power



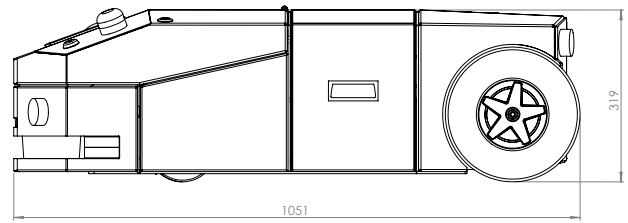
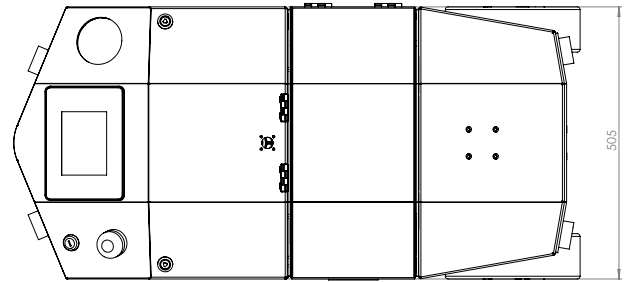
**DATASHEET**  
**Movexx AGV1000**



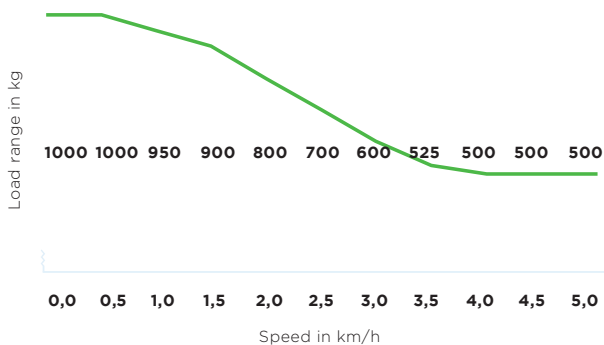
## Specifications AGV1000

<b>Version</b>	Uni-directional AGV
<b>Application</b>	Pulling of trolleys
<b>Trolley weight</b>	Maximal 1000 kg
<b>Speed</b>	Stepless to 4,7 km/h
<b>Corner speed</b>	Maximal 1,0 km/h
<b>Corner radius</b>	Minimal r=1000 mm
<b>Navigation</b>	Optical with RFID-tags
<b>Traction</b>	300 W, 24 VDC, 100 rpm
<b>Traction wheels</b>	Full rubber Ø250x80 mm
<b>Brake</b>	Electric
<b>Parking brake</b>	Electromagnetic
<b>Energy supply</b>	Lithium batt. 24V 36Ah
<b>Back-Up supply</b>	B-U batt. 24 V 1,2 Ah
<b>Frame construc.</b>	Steel powder coated
<b>Weight</b>	150 kg with battery
<b>Length</b>	1051 mm
<b>Width</b>	505 mm
<b>Height</b>	326 mm
<b>Noise level</b>	68,5 dB
<b>Usage temp.</b>	0°C - 55°C
<b>Protection class</b>	IP44

## Dimensions AGV1000



## Pulling power AGV1000 (in kg)



*\*Measured with a trolley with 2 swivelwheels and 2 fixed castors. Wheel diameter: 160mm*

## Standard AGV1000



## Standard parts AGV1000



**Battery Lithium-LiFe-PO4, 36Ah GREEN**

Item number:  
OPT0106



**Full-rubber drive wheel, black Ø250mm**

Dimensions Ø250 x 80 mm

Item number:  
M0248



**Safety Scanner RSL420-S 3m 10 fieldpairs**

*Safety scanner with 10 individual switchable field pairs. Maximal range 3m, 270°*

Item number:  
M0978



**Lightvision module AGV with LED's**

*Two white daylight LED's on the front, two red daylight LED's on the back*

Item number:  
OPTAGV0009

## Standard parts AGV1000

**Motor 300W 100RPM with brake**



Item number:  
M1033

**Charger 25,6V 10A LITHIUM**



Item number:  
M0384

**Cable remote with emergency stop**



*Forward, backward, left, right and emergency stop*

Item number:  
OPT0104

**RFID + 5,7" display module on AGV**



*Full colour control display with programming options for RFID-tags en routing*

Item number:  
OPTAGV0001

## Options AGV1000



### Battery Lithium-LiFe-PO4, 36Ah GREEN

Article number:  
OPT0106



### Light Blue Spot Safety light

*Daylight blue LED for groundspot*

Article number:  
M0961



### Horn 103 dB

Article number:  
OPT0059



### Tool/coupling box

Article number:  
OPT0014



### Hook disconnection module AGV

*Stroke: 100 mm, 50 mm stroke on special request*

Article number:  
OPTAGV0003



### Hook load recognition module AGV

*With one or two (depending off the type of mounted hook) inductive sensors*

Article number:  
OPTAGV0007



### Non marking wheels Grey 2 pc. AGV

Article number:  
OPTAGV0010



### Ignition key equal keys AGV

Article number:  
OPTAGV0011



### Flashlight+console complete AGV1000/2500

*Console: start/stop and emergency-stop. Flashlight: daylight LED's orange, green, red and blue.*

Article number:  
OPTAGV0014



### Programmer for Ital-sea

Article number:  
D0003



### Charging Station for 1 Lithium battery

*Wallmounting charger-station with lithium battery charger 29,2 V, 10 A*

Article number:  
OPT0023



### Charging station for 5 Lithium batteries

*Upright standing charging station with five separate lithium battery chargers 29,2 V, 10 A*

Article number:  
OPT0029

## Options AGV1000



### Frame for charging station

for wall mounting, Excluding charger (!)

Article number:  
OPT0261



### RFID TAG 86x54mm 0.8mm (creditcard)

Radio Frequency Identification tag to control AGV's (speed changing, stop etc.)

Article number:  
M0974



### RFID TAG Ø20 x 2,8mm plastic (disk)

Radio Frequency Identification tag to control AGV's (speed changing, stop etc.)

Article number:  
M0988



### Sticker AGV track straight w=160mm l=3m

To control speed RFID-tags along the track are needed

Article number:  
M2731-0010



### Sticker AGV track curve 45° w=160mm r=1m

Maximum corner speed 1 km/h

Article number:  
M2731-0011



### Sticker AGV track curve 90° b=160mm r=1m

Maximum corner speed 1 km/h

Article number:  
M2731-0012



### Sticker AGV track switch left 45° l=1m

For driving the intersection RFID-tags are needed. Maximum intersection speed is 1 km/h

Article number:  
M2731-0013



### Sticker AGV track switch right 45° l=1m

For driving the intersection RFID-tags are needed. Maximum intersection speed is 1 km/h

Article number:  
M2731-0014



### RFID TAG 80x50mm papercard self-adhesive

Radio Frequency Identification tag to control AGV's (speed changing, stop etc.)

Article number:  
M2803



### RFID Tag Ø=50mm d=3,3m

Radio Frequency Identification tag to control AGV's (speed changing, stop etc.)

Article number:  
OPT0095



### Demo floor grey AGV 6.5x3,0m

Plastic tile floor, easy to install, with slow/fast RFID-tags

Article number:  
OPTAGV0000



### Base part hook 90°

Article number:  
H7030

## Options AGV1000



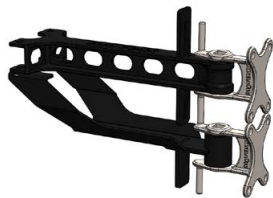
**Base part hook 90°  
double spring**

Article number:  
H7040



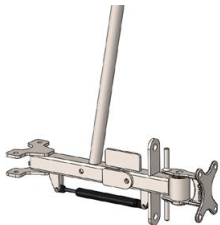
**Base part heavy hook 90°  
lowered**

Article number:  
H7070



**Base part heavy hook 90°  
raised**

Article number:  
H7080



**Base part hook 90°  
manual control**

Article number:  
H7090



**Pen for Drawbar Ø16  
incl. Backplate**

Article number:  
H0064



**Towbar + pin Ø15mm  
incl. Back plate**

Article number:  
H0071



**Folding Hook, diame-  
ter 16**

Article number:  
H0128-D16



**Folding Hook, diame-  
ter 20**

Article number:  
H0128-D20



**Folding Hook, diame-  
ter 25**

Article number:  
H0128-D25



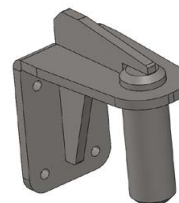
**Folding Hook, diame-  
ter 32**

Article number:  
H0128-D32



**Folding Hook, diame-  
ter 35**

Article number:  
H0128-D35



**Pin drawbar Ø35  
complete**

Article number:  
H0144

## Options AGV1000



### Quick connection hook AGV semiautomatic

*With OPTAGV0003 is a half automatic connection and fully automatic load disconnection possible*

Article number:  
H5123

### Hook locking system



Article number:  
OPT0012

### Basemodule, spring, bolt en counterplate



Article number:  
OPT0203

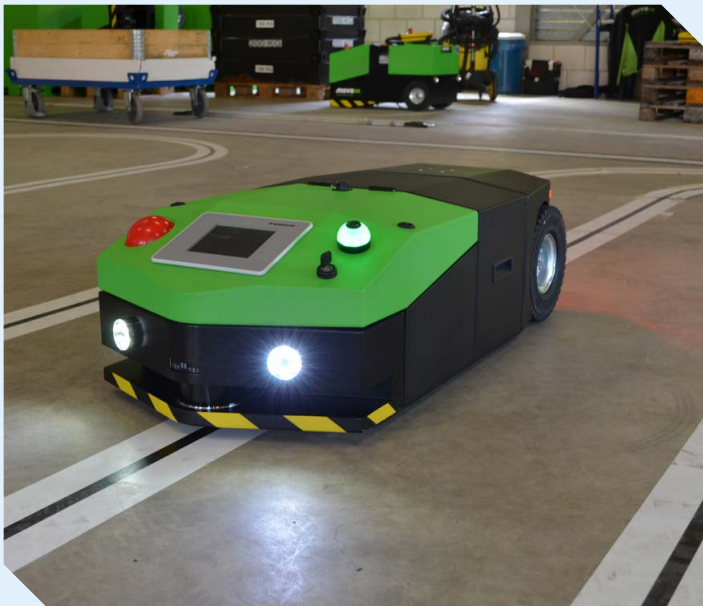
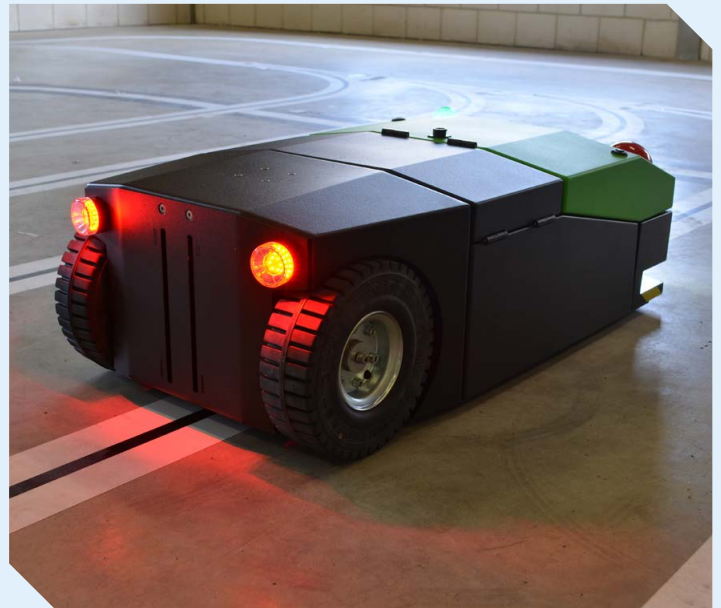
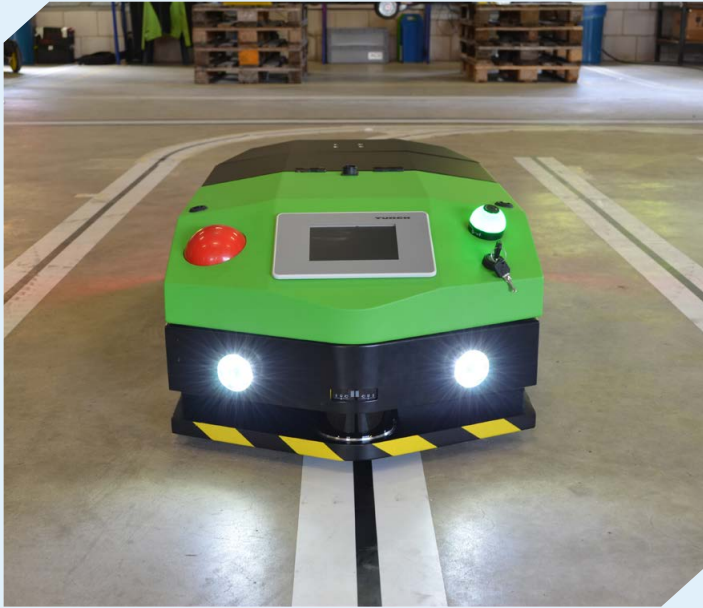


### Advice & Consultancy "on-site" per day

*Exclusive travel costs & lodging*

Article number:  
ADVIES





## **Movexx International B.V.**

Generatorstraat 17

3903 LH Veenendaal

Tel +31 (0)318 51.99.00

Fax +31 (0)318 50.80.20

E-mail [info@movexx.nl](mailto:info@movexx.nl)