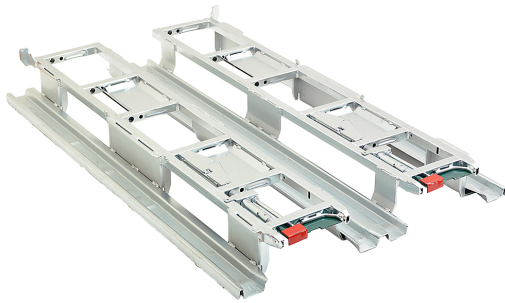


# Lean Adaptor pallet – from wheeled to pallet logistics



Safe and strong unit for easy transport or warehousing of Lean Dollies, Lean Adaptor pallet combines the benefits of both Euro pallets and wheeled units.

It can be moved at once with a forklift from both the short and the long sides. When needed, Lean Dollies can be easily rolled out from the pallet without lifting.

## Technical specifications

External dimensions 1218 x 800 x 120 mm

Unit tare weight 39 kg

Working load 1000 kg

Loaded units / 40' trailer 60

Stacked units / 40' trailer 450

Stacking in warehouse 3 on the top of each other (max. 3000 kg on lowest adaptor pallet when using the adapted lid)

Finish Electro zinc plated

## Designed for following uses and industries:



## Key benefits

- ✓ Optimal use of transport and floor space
- ✓ Minimize manual handling
- ✓ Reduce turnaround time
- ✓ Low repair costs: light weighted but strong construction
- ✓ Designed for handling on automated conveyor systems
- ✓ Excellent stability: optimized for return freight
- ✓ Painted brakes for better visibility
- ✓ Safe unit with dolly stop at rear